

FAULT FINDING

Symptom	Possible Fault	Cure
No light	No Lamp Faulty Lamp No Power	Fit Lamp Fit new lamp Check supply and spotlight cable Extend shutters Remove and re-insert
Uneven Light	Shutters Fully in Lamp chassis not seated Lamp Adjustment knob moved Lamp not fully seated in holder Reflector setting	Check lamp adjustment Check lamp in lampholder, observing safety precautions Check

MAINTENANCE

Open lamp chassis observing safety precautions. Clean the reflector through the bottom of the lamphouse with the tube removed using a slightly damp cloth to which a little detergent has been added. Lenses should be cleaned with a damp cloth only. Periodic inspection should be carried out, of the lampholder and cable. Any components showing wear or damage should be replaced immediately. Contact your CCT representative for list of spare parts available.

CAUTION

Damaged lenses or UV safety screens **MUST** be replaced before luminaire is used.

(a) When replacing or adjusting a lamp, the product, with particular attention to all internal and external wiring, should be inspected and any faults corrected.

(b) At least once every twelve months the product, if portable, should be bench inspected for electrical and mechanical wear and damage. If not portable this inspection should be carried out in situ.

(c) Depending upon usage, internal and external wiring will deteriorate in time and should be replaced at the first indication of wear or aging.

(d) Product can be returned to any CCT service representative for repair and or maintenance. Spare and replacement parts can be supplied for use by other competent service technicians available to the user.

FINALLY CHECK CABLE FOR ANY DAMAGE

CCT Theatre Lighting Limited, is constantly developing, improving and changing its product line. All descriptions and specifications in this publication present only general particulars and shall not form any part of any contract. The right is reserved to change the specification without prior notification.

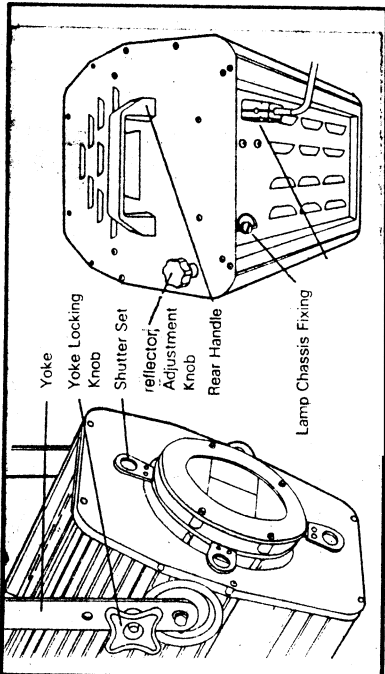
ACCESSORIES

- Z0016 Drop-in Iris
- Z0017 Bolt in Iris/Blackout
- Z0240 10 way auto iris controller
- Z0024 Auto iris
- Z0120 Roto Gobo Holder
- Z0121 Standard Gobo Holder
- Z0047 Set of 4 drop in circular masks sizes 16, 30, 50, 60mm diameter
- Z0014 Extra colour frame
- Z0004 Lenstube safety mesh
- Z0120 Roto Gobo holder
- Z0121 Standard Gobo holder

CCT Lighting

USER INFORMATION

Leaflet ref: WOOD01 Jan '90



Silhouette Zoom Profile Spotlight

Base Down Lamp 2500W
Order Code Z00D0 Y/X/W
220/240V ONLY

WARNING - BEFORE USE :-

- (a) Read CCT Lighting User Information General leaflet.
- (b) Read these instructions.
- (c) Inspect product for damage upon removal from its carton.
- (d) Ensure that external supply wiring and socket (if to be used) is properly installed and protected.

THIS INFORMATION IS GIVEN IN THE BEST INTERESTS OF: Safety, Handling, Installation, Use and Maintenance of products sold by CCT lighting.

Instructions relevant to each product will be found in the carton in which the product is supplied. They must be carefully read before any attempt is made to use and/or install the product. The instruction sheet should be retained for further reference. Additional copies are available on request.

In the UK, installers and users are obliged under the "Health and Safety at Work Act" to ensure that they are acquainted with information supplied with the product and are fully aware of any precautions that need to be taken.

CCT products are designed to conform to the requirements of UK law and to the requirements of relevant national and international standards.

SPECIAL NOTE

CCT products should not be modified. Any modification may render the product unsafe and will invalidate any safety/approval marks. CCT Theatre Lighting Limited, will not accept any responsibility for any damage caused as a result of their modification.

INSTALLATION

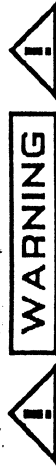
Installation of CCT products should be carried out only by competent persons in accordance with instructions supplied with the luminaire and/or accessory. If in any doubt, consult a suitably qualified person.

LAMP FITTING

Suitable lamps - Base MUST be **G.22**

2500W CP91

Damaged or thermally deformed lamps MUST NOT be used. Lamp manufacturers instructions must be followed at all times.



WARNING

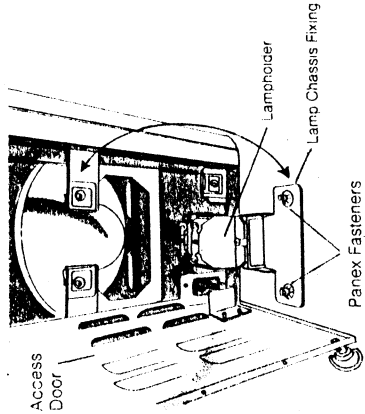
Never attempt to insert a lamp with the spotlight connected to a dimmer circuit or to mains. Before opening the spotlight unplug the power cable. Failure to observe this precaution -

MAY RESULT IN SEVERE BURNS.

Do not touch the lamp surface - use the disposable glove or shield provided with the new lamp when fitting it into the lampholder. When changing a recently failed lamp, allow time for the lamp and lens to cool before removing it from the spotlight.

TO GAIN ACCESS TO LAMP

release Panex fastener in bottom access door. To open, release the 2 Panex fasteners in lamp chassis and hinge down to reveal lamp chassis and lamp.



LAMPHOUSE

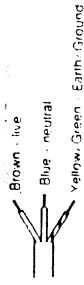
The Silhouette **Z00DOHW IS** part of a range which includes :-

1000W Base Down Lamphouse

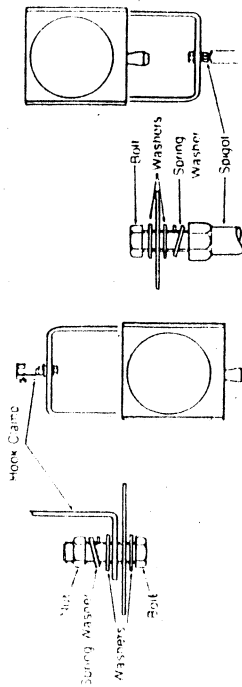
Beam Tilt Angle 90° - 0° - 70°

FITTING PLUG

A suitable plug of at least 10A (220/240V) rating should be fitted to the spotlight power cable, observing the connection colour code as follows:



MOUNTING



REFACE TEMPERATURE (MST)

150°C to 45°C

FOCUS AND LAMP ADJUSTMENT

The lens system allows variable zoom beam spread and should be used to set the required beam size before trimming with the shutters or the iris.

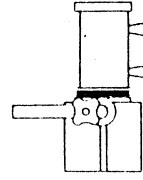
(a) With shutters/iris fully open slacken lens knobs and slide adjust to maximum acceptable beam size/hardness. Tighten lens knobs.

(b) With a new lamp, socket support trim screws should be adjusted to centralise filament.

(c) By means of shutters/iris adjust gate size as required. If a Gobo is being projected, lenses and shutters can be trimmed for image size and definition. (see also d.)

(d) Trim lens and reflector settings for optimum performance* by adjusting control knobs. Ensure they are fully finger tightened when setting has been completed.

* Peaky or flat field. Minimum/maximum brightness. Soft/hard focus



Rear Front
LENS KNOBS

WARNING

3.5 m

Minimum distance from lighted object with 10° lens (worst situation)

