

The Minuette Follow Spot

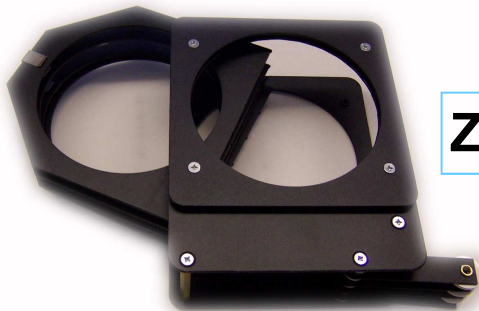
Z0608FS 6-14 DEG



The smallest and for its size the most efficient Follow spot on the market. The 150mm front lens coupled with condenser optics ensures performance which is surprising in a 650w unit. Ideal for small venues, schools and clubs. Features of the unit include:- Built in iris and blackout with lever beneath the unit for ease of operation. Four beam shaping shutters. Quadrant friction balancing. Side and rear operator handles. Optional extra colour change magazine (as shown on the photograph not part of the standard unit).

Typical performance based on calibrated T27 650w
C13D bi plane 400 hr 100K 14,500 Lumen

Peak setting	Cut off angle	1/2 Peak angle	Peak candela
Narrow	6 deg	5 deg	188,500
Wide	14 deg	12 deg	36,000



Z0019 COLOUR CHANGE

COLOUR CHANGE UNIT 4 WAY HAND OPERATED . CAN BE REVERSED FOR LEFT OR RIGHT HAND USE.

CCT Lighting (UK) Limited
Unit 3 Ellesmere Business Park
Haydn Road, Sherwood
Nottingham
NG5 1DX
Tel: 44(0)115 985 8919
Fax: 44(0)115 985 7091
Email: office@cctlighting.co.uk
Website: www.cctlighting.com

The Freedom Follow Spot



THE FREEDOM FOLLOW SPOT RANGE SHOWN HERE WITH INTEGRAL DIMMER IS AN AFFORDABLE VERSATILE UNIT SUITABLE FOR USE IN SMALL TO MEDIUM VENUES. THE DIMMER IS AN OPTIONAL EXTRA AND IS SPECIALLY DESIGNED TO FIT UNDER THE UNIT, SHORT CIRCUIT PROTECTED AND SLIDER OPERATED IT IS AN IDEAL COMPANION. THE UNIT WILL ALSO TAKE THE Z0019 HAND OPERATED COLOUR CHANGER

Z00MGFSI 7-17 DEG

Z00MGFSI PROFILE (800W HX800)				
MINIMUM ANGLE				
PEAK CANDELA	236,550			
BEAM ANGLE	6.25			
CUT OFF ANGLE	7.0			
DISTANCE (M)	6	12	18	21
CUT OFF DIA (M)	0.7 2	1.44	2.16	2.52
PEAK ILLUMINATION (LUX)	657 1	1643	730	536

MAXIMUM ANGLE				
PEAK CANDELA	189,780			
BEAM ANGLE	10			
CUT OFF ANGLE	17.0			
DISTANCE (M)	6	12	18	21
CUT OFF DIA (M)	1.8	3.6	5.4	6.3
PEAK ILLUMINATION (LUX)	5272	1317	586	430



BOTH UNITS HAVE SPACED OFF HANDLES FOR COOL HANDLING, STIFFENED HOOP FOR RESISTANCE TO VIBRATION DURING USE

- HIGH EFFICIENCY FACETTED REFLECTOR FOR A FLAT FIELD AND EVEN BEAM QUALITY
- NEW SPECIALLY DESIGNED ASPHERIC LENS SYSTEM
- AUTOMATIC DISCONNECTION OF POWER SUPPLY ON LAMP CHANGE
- ENERGY SAVING LAMPS EQUIVALENT OUTPUT OF TRADITIONAL 1KW AND 2KW UNITS BUT LOWER ENERGY CONSUMPTION
- CAN BE USED WITH AN INTEGRATED FREEWAY RADIO DIMMER
- OPTICAL SYSTEM GIVES EVEN BEAM, GREAT DEPTH OF FIELD AND IMAGE CLARITY—ENSURING GOBOS STAY IN FOCUS REGARDLESS OF THE PROJECTION ANGLE

Z00MLFSI 16-30 DEG

Z00MLFSI PROFILE (800W HX800)				
MINIMUM ANGLE				
PEAK CANDELA	158,400			
BEAM ANGLE	12.0			
CUT OFF ANGLE	16.0			
DISTANCE (M)	6	9	12	15
CUT OFF DIA (M)	1.69	2.53	3.37	4.22
PEAK ILLUMINATION (LUX)	4400	1956	1100	704

MAXIMUM ANGLE				
PEAK CANDELA	110,403			
BEAM ANGLE	20.0			
CUT OFF ANGLE	30.0			
DISTANCE (M)	6	9	12	15
CUT OFF DIA (M)	3.22	4.82	6.43	8.04
PEAK ILLUMINATION (LUX)	3067	1363	767	491

RECOMMENDED LAMPS				
GKV	600W	230V	14000 LUMENS	300HRS
HX800	800W	230V	20000 LUMENS	250 HRS

TYPICAL PERFORMANCE BASED ON HX800 800W 230V BI-PLANE 300 HR 3100K ALL PHOTOMETRIC DATA IS INDICATIVE OF TYPICAL PERFORMANCE ONLY. SPECIFICATIONS AND MATERIALS MAY BE CHANGED WITHOUT PRIOR NOTICE

CCT Lighting (UK) Limited
 Unit 3 Ellesmere Business Park
 Haydn Road, Sherwood
 Nottingham
 NG5 1DX
 Tel: 44(0)115 985 8919
 Fax: 44(0)115 985 7091
 Email: office@cctlighting.co.uk
 Website: www.cctlighting.com